

**Fika**, situated on the southwest corner of 13<sup>th</sup> Avenue South and 33<sup>rd</sup> Street in Fargo, North Dakota, provides a warm, safe, and inviting haven for those needing an escape from the unpredictable climate.

The Design

Fika’s interior is a midwestern spin on Scandinavian design. The palette is inspired by the tones and textures of the Northern-Midwest outdoors. Warm greens, burnt oranges, amber, and grey finishes as well as accents of lingonberry red are featured throughout. Locally sourced reclaimed wood finishes, along with a cork-birch-wallcovering, are incorporated depicting the tree bark from the northern forests. Wool finishes are meticulously placed providing acoustical properties. A variety of modern furnishing is selected producing an array of inclusive seating options. Laundering, pet care, manicure, showering, light snacking, and beverage services are featured amenities. Fika provides a landing for refreshment, warmth, and safety from Fargo’s oscillating outdoors.

Fika

[fee-ka] Swedish

(n.) A moment to slow down and take a break.



Along with the outdoors, the concept for the interior’s design was inspired by a Nordic influenced charcuterie board. Charcuterie boards offer a little something for everyone. They give variety, and are filled with color and texture. This board in particular captures the tones and variants of texture Fika’s interior possesses.

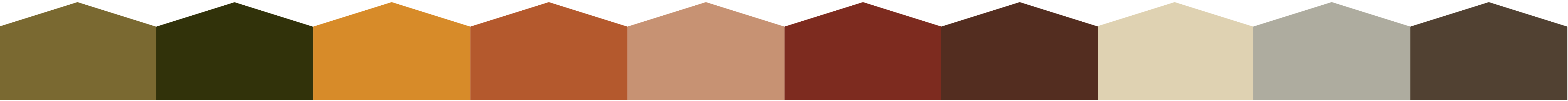


Fika places high importance on accessibility and inclusivity. ADA regulations are integrated throughout the center’s design. Transaction heights, toe kicks, fixture placements, and furniture pieces all follow the ADA regulations. Multiple 5’-0” turning zones are placed throughout the floorplan. The flooring used is zero-threshold allowing for smooth maneuvering for all abilities. Fika’s design and layout is all-inclusive.

FF&E



Research		
Article	Analysis	Application
Lava Mae. (2019). Retrieved from https://lavamae.org/	Lava Mae is a non-profit based in San Francisco, CA (Lava Mae, 2019). Their mission is Radical Hospitality, treating people with dignity and serving them with respect (Lava Mae, 2019). They focus on hygiene and offer showers, toiletries, and partner with professionals for haircuts through their mobile services (Lava Mae, 2019).	<ul style="list-style-type: none"><li>Design the interior to promote an atmosphere of respect and dignity.<ul style="list-style-type: none"><li>Design the bathrooms with maximum privacy (e.g. enclosed walls, locking flat panel doors, and appropriate acoustical installation.</li><li>Design the amenities to be self-serviced, except for the manicure stations.</li></ul></li><li>Incorporate a substantial amount of storage for toiletries within the shower area support space.</li><li>We imagine a cosmetologist volunteering a couple time a week to assist in manicures and haircuts.<ul style="list-style-type: none"><li>Design the manicure area to be easily transitioned into a makeshift salon.</li></ul></li></ul>
The Renewal Project.(2018). What homeless shelters really need. Retrieved from https://www.the renewal project.com/what-homeless-shelters-really-need/	According to this article the homeless population has increased immensely (The Renewal Project, 2018). Roughly 533,000 people were homeless on a single night in January 2018 (The Renewal Project, 2018). Their research showed shelters not only need money, but simple things often taken for granted (e.g., toiletries, clothing, warm showers, clean clothes, a safe place to relax and stay warm) (The Renewal Project, 2018).	<ul style="list-style-type: none"><li>Incorporate a variety of comfortable seating throughout the interior for guests to relax.</li><li>Design the interior with warm tones with rustic and cozy finishes.<ul style="list-style-type: none"><li>Incorporate felt, wool, and wood finishes.</li><li>Use brown, grey, orange, yellow, and red tones.</li></ul></li><li>Create a homelike and welcoming atmosphere throughout the interior.<ul style="list-style-type: none"><li>Design the layout so it is easy to navigate.</li><li>Arrange the furnishing in the lounge to mimic a living room setting.</li><li>Design the café to be self-service and have a residential aesthetic.</li></ul></li></ul>
Mclaflin, Brady tour guide at Churches United Shelter and Community Center. Moorhead, MN. (Tour, August 29, 2019).	Churches United Shelter and Community Center offers a warm place to relax, have a meal, launder, enjoy the outdoors on the patio, and socialize with others in the community. They offer short term housing as well. The center's layout is open providing ample space to maneuver throughout making it easy to navigate.	<ul style="list-style-type: none"><li>Design the layout to be open and simple to navigate.<ul style="list-style-type: none"><li>Design one main hallway to help with navigation and avoid corners of the unknown.</li></ul></li><li>Incorporate multiple seating areas to help promote community interaction and socialization.</li><li>Design the outdoor space to accommodate social gatherings.<ul style="list-style-type: none"><li>Incorporate a palette of seating areas and options.</li><li>Include a fireplace and grill to encourage interaction.</li></ul></li><li>Include a garden within the outdoor area to promote healthy eating and community interaction.</li></ul>



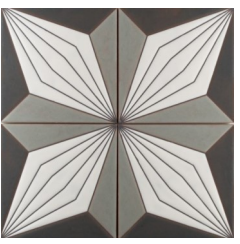


# fika

## Common Area



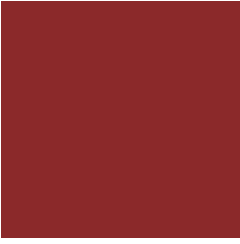
Palmera Fireclay Tile



Rugged Quartz Countertop



Caliente Paint



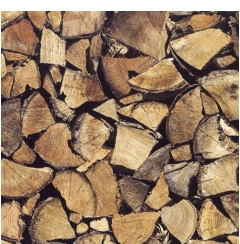
Magee Plaid Carpet



Feltworks Acoustical Ceiling Panels



Wood Grain Wallpaper



Woven Wool Wallcovering



Passel Wool Upholstery



Drum Scraplight Pendant Light



Honken S Lounge Chair



Papa Table



Manicure stations

Aeron Task Chair



Donor wall above charging station

Papa Chair



Eames Task Chair



Eames Wire Task Chair



## Main Hallway

Fika's layout consists of one main hallway for simple and easy navigating. The hallway is 5'-0" wide allowing swift maneuvering for all abilities.

The main flooring used throughout the center is a vinyl tile. This vinyl tile in particular withstands high traffic, is slip resistance, and has earned a Floor Score certification.

Waipoua Vinyl Tile



Sign with shower and toilet symbol to assist with wayfinding.

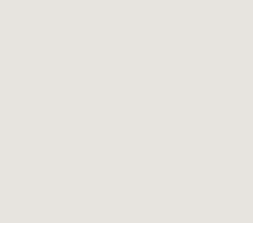
## Restrooms



Steel Vinyl Tile Flooring



Edo Lacquer Vinyl Wall Covering (Class A)



Al la Mode Paint



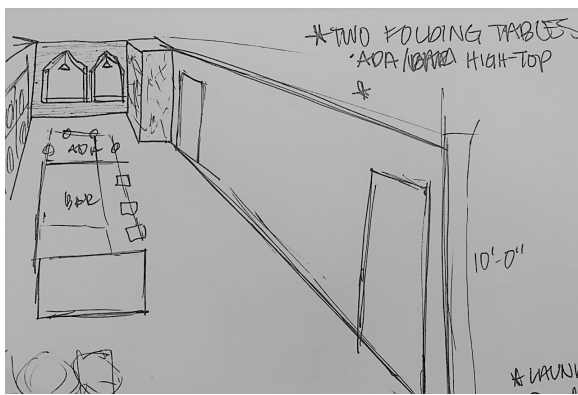
Granite Paint



## Laundry Room



Preliminary Sketch



Muffins Wood Pendant

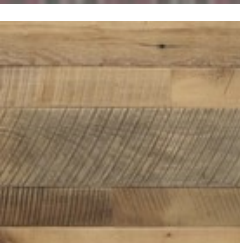
Corrente Upholstery (PVC, phthalates and solvent free)



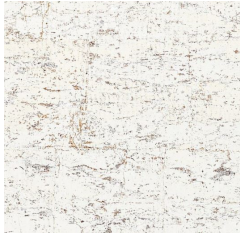
Red Tartan Wallpaper



Reclaimed barn wood paneling from Dakota Timber Company



## Administration



Cork Wallcovering



Backwoods Paint

Moon Scraplight Natural Pendant Light



## Outdoor Common Area



Rocking fabric garden armchair

Sunbrella Performance Canvas Windowpane Fabric



Volta Accent Table

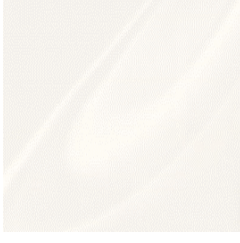
Desiree Rope Garden Sofa



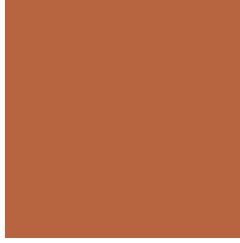
## Pet Area



Flourish Wallpaper



Corian Solid Surface



Rust Paint

Preliminary Sketches

